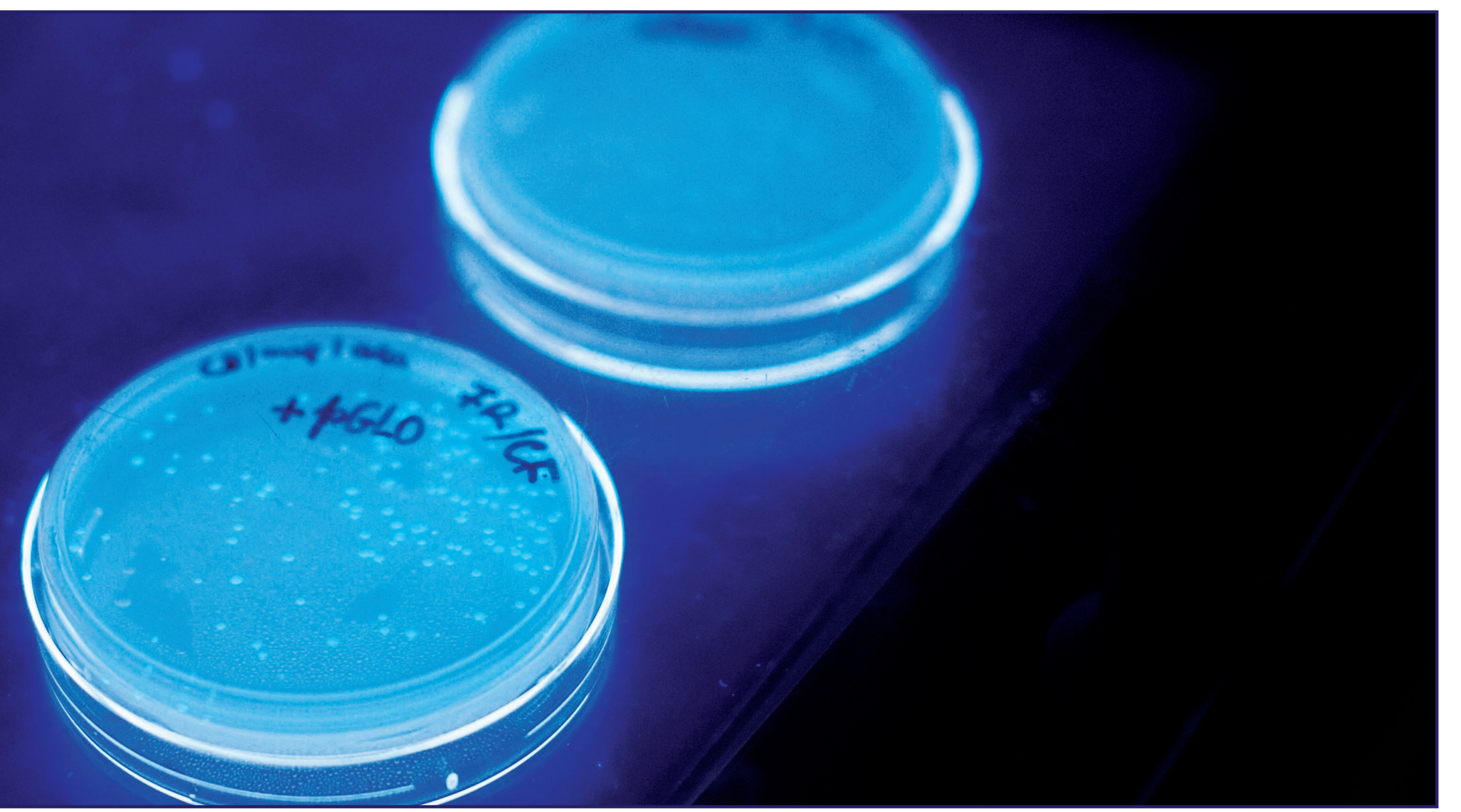


POST-DOC SEMINARS

12H IBMC Auditorium



OCT 3

Anticipation in Familial Amyloid Polyneuropathy (FAP ATTRV_{30M}): an epidemiological and genetic approach

Carolina Lemos, UnIGENe

NOV 14

Is chronic visceral pain a consequence of sympathetic autonomous nervous system dysfunction?

Ana Charrua, Translational Neuro-Urology

OCT 17

Novel thrombin inhibition mechanism by anophelin - an anticoagulant from the malaria vector

Ana Figueiredo, Biomolecular Structure

NOV 28

Good Neighbors teach new daughters how to get in shape: Coordinating epithelial cell division with tissue organization

Eurico Sá, Molecular Genetics

OCT 31

Clasp1 is essential for neonatal lung function and survival

Ana Lúcia Pereira, Chromosome Instability & Dynamics

DEC 12

A genome-wide RNAi screen in *C. elegans* to unravel mitotic bipolar spindle assembly

André Maia, Molecular Genetics