

integrative programs seminars



INSTITUTO
DE INVESTIGAÇÃO
E INOVAÇÃO
EM SAÚDE
UNIVERSIDADE
DO PORTO

14 SEPTEMBER 2017 | 12H | AUDITORIUM MARIANO GAGO



Célia Cruz

Translational NeuroUrology Group

Bladder dysfunction after spinal cord injury: where do we stand?

NEUROBIOLOGY AND NEUROLOGIC DISORDERS

28 SEPTEMBER 2017 | 12H | AUDITORIUM MARIANO GAGO



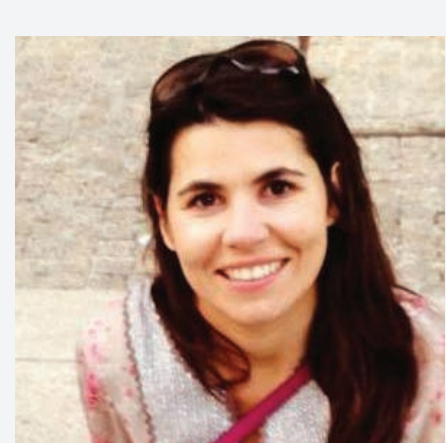
Pedro Rodrigues

Iron & Innate Immunity Group

The molecular mechanisms involved in anaemia caused by *Trypanosoma brucei* infection

HOST INTERACTION AND RESPONSE

19 OCTOBER 2017 | 12H | AUDITORIUM MARIANO GAGO



Cristina Ferrás

Chromosome Instability & Dynamics Group

Does active transcription occur during mitosis? Going beyond a dogma!

CANCER

02 NOVEMBER 2017 | 12H | AUDITORIUM MARIANO GAGO



João Relvas

Glial Cell Biology Group

Microglia goes to trial: from bystanders to presumed culprits

NEUROBIOLOGY AND NEUROLOGIC DISORDERS

23 NOVEMBER 2017 | 12H | AUDITORIUM MARIANO GAGO



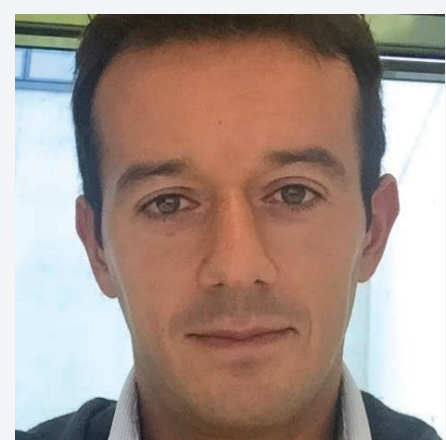
Isabel Silveira

Genetics of Cognitive Dysfunction Group

A Pentanucleotide Repeat Insertion in the Non-coding Region of Dab1 Causes Spinocerebellar Ataxia 37

NEUROBIOLOGY AND NEUROLOGIC DISORDERS

07 DECEMBER 2017 | 12H | AUDITORIUM MARIANO GAGO



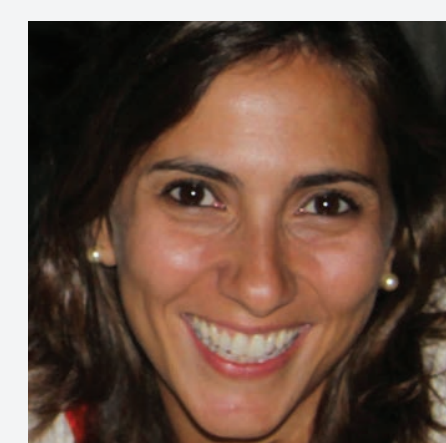
Nuno Alves

Thymus Development and Function Group

Functional heterogeneity in thymic epithelial cells: Implications for Host Immune Responses (HIR)

HOST INTERACTION AND RESPONSE SEMINAR

21 SEPTEMBER 2017 | 12H | AUDITORIUM MARIANO GAGO



Joana Paredes

Epithelial Interactions in Cancer

Basal stem cell signature in cancer

CANCER

12 OCTOBER 2017 | 12H | AUDITORIUM CORINO DE ANDRADE



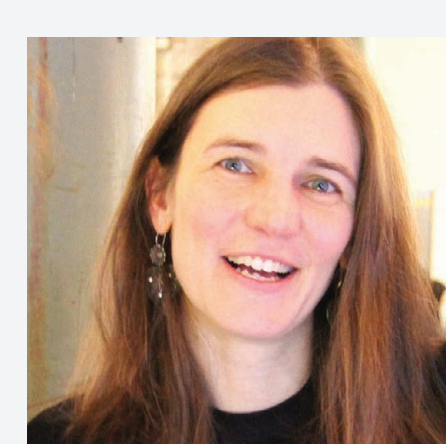
Teresa Summavielle

Addiction Biology Group

Psychostimulants change neuronal morphology to modulate behaviour

NEUROBIOLOGY AND NEUROLOGIC DISORDERS

26 OCTOBER 2017 | 12H | AUDITORIUM MARIANO GAGO



Maria José Oliveira

Tumour Microenvironment Group

Macrophages as modulators of the host response to cancer

HOST INTERACTION AND RESPONSE

16 NOVEMBER 2017 | 12H | AUDITORIUM MARIANO GAGO



Salomé Pinho

Glycobiology in Cancer Group

Impact of Glycans in the regulation of immune response

HOST INTERACTION AND RESPONSE SEMINAR

30 NOVEMBER 2017 | 12H | AUDITORIUM MARIANO GAGO



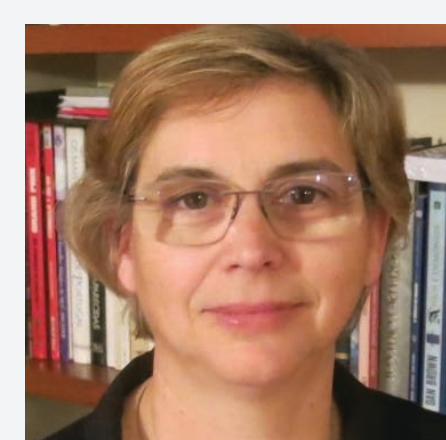
Valdemar Máximo

Cancer Signalling & Metabolism Group

Mitochondria, metabolism and cancer

CANCER

14 DECEMBER 2017 | 12H | AUDITORIUM MARIANO GAGO



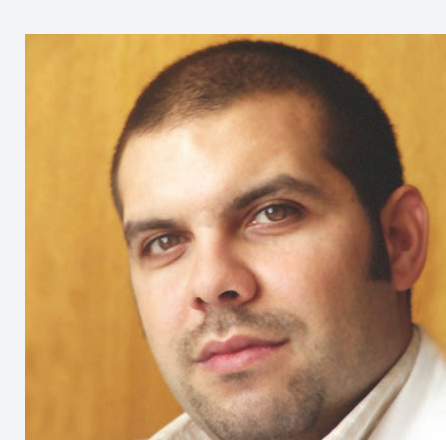
Rosário Almeida

Molecular Neurobiology Group

Transthyretin Amyloidosis - protein aggregation and inhibitors disease modulators

NEUROBIOLOGY AND NEUROLOGIC DISORDERS

21 DECEMBER 2017 | 12H | AUDITORIUM MARIANO GAGO



Miguel R. Gonçalves

Metabolism, Nutrition & Endocrinology Group

Living with Artificial Breathing: clinical impact of ventilatory support protocols in patients with chronic respiratory failure

CANCER